



IS:3989



Kapilansh Centrifugal

**Pipes & Fittings
for Superior Drainage Systems**



KAPILANSH
DHATU UDYOG (P) LTD.

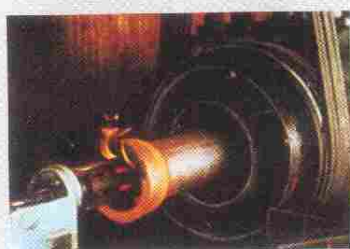
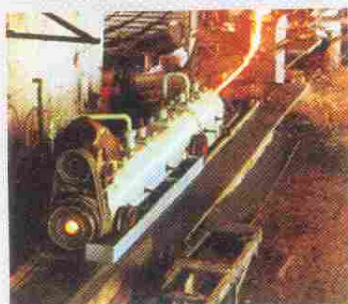
Manufacturers of Cast Iron Socket & Spigot Spun Pipes,
Cast Iron Soil Pipes & Fittings & Cast Iron Earthing Electrodes
'Ductile Iron' Manhole Covers, Frames & Gratings.

An ISO 9001:2008 Certified Company

**Providing Superior Centrifugal Piping Solutions
with Experience & Expertise of over two Decades**



PROCESS



PROFILE

"Kapilansh" the name that has become synonymous with Centrifugally Cast Pressure Pipes in India, offers Centrifugally Cast (spun) Iron Spigot & Socket Soil, Waste & Ventilating pipes, fitting & Accessories for all your Drainage System needs i.e.

- * Discharge of Soil & Waste
- * Discharge of Rain Water
- * Ventilation

Kapilansh with their expertise in manufacturing Cast Pressure Pipes, utilizes De Lavaud Process for manufacturing Kapilansh Centrifugal Pipes. A true centrifugal Casting process in which each pipe is casted individually in metal moulds ensuring superior quality. The superior quality assurance and control measures ensure you get only the best piping for the drainage system.

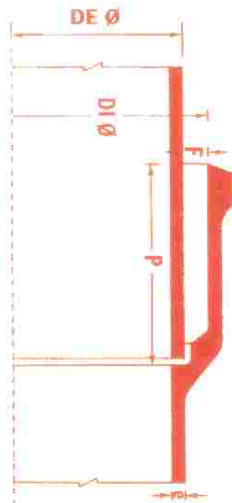
Technical Parameters:

- 1) Metal grade : As per IS : 210
- 2) Mechanical Properties :
 - * Tensile strength : 180 MPa for Pipes & 150 MPa for Fittings.
 - * Hardness : 230 HBS (Max)
- 3) Hydrostatic Test : At a pressure of 0.07 MPa
- 4) Hammer Test : Clear ringing sound, when struck with light hand held Hammer
- 5) Coating Test : At a temperature of 65° C for flow & at 0° C for chip off.
- 6) Dimensional Check-up : conforming to tolerances specified in Standard Specification.



Kapilansh Centrifugal

Centrifugally Cast (Spun) Iron Spigot And Socket Soil, Waste and Ventilating Pipes, Fitting & Accessories IS : 3989



(TABLE-1) : DIMENSIONS OF SOCKETS AND SPIGOTS OF PIPES

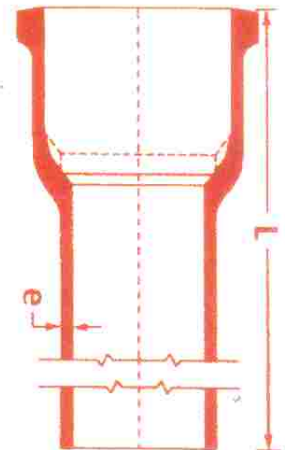
Nominal Diameter Dn	Barrel		Socket		Joint Thickness F
	e	DE	DI	P	
75	3.5	83	99	65	8.0
100	4.0	109	126	70	8.5
150	5.0	161	179	75	9.0
200	6.0	212	242	85	15.0

All dimension are in millimeters

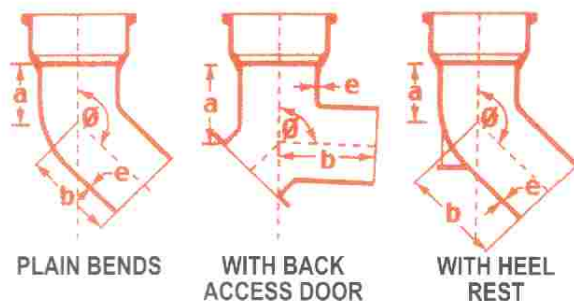
(TABLE-2) : APPROXIMATE MASS OF SOCKET AND SPIGOT PIPES

Nominal Diameter Dn	Thickness e	Approximate Mass Including Mass of Socket For Pipes of Length (L) Meters				
		3.000 m kg	2.500 m kg	2.000 m kg	1.800 m kg	1.500 m kg
75	3.5	20.0	16.8	13.8	12.5	10.6
100	4.0	30.0	25.5	21.0	18.8	16.0
150	5.0	56.0	47.0	38.5	34.9	29.5
200	6.0	90.0	70.9	56.7	51.0	42.5

All dimension are in millimeters



(TABLE-3) : BENDS WITH AND WITHOUT ACCESS DOORS



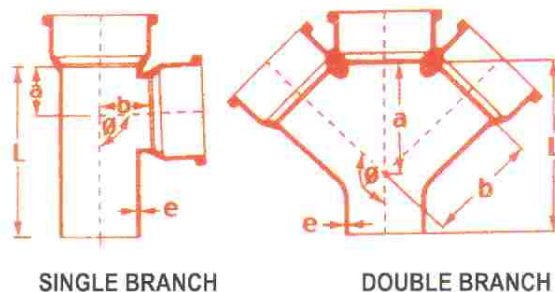
Angle	Nominal Diameter Dn	Dimensions			Approximate Mass of Bend (Kg)		
		e	a	b	Plain	With Door	With Heel rest
92 1/2°	75	3.5	78	140	2.4	2.8	2.7
	100	4.0	91	157	3.8	4.4	4.3
	150	5.0	117	186	7.9	8.7	8.7
135°	75	3.5	47	104	2.1	2.5	2.4
	100	4.0	53	114	3.3	3.9	3.8
	150	5.0	65	129	6.5	7.3	7.3

All dimension are in millimeters



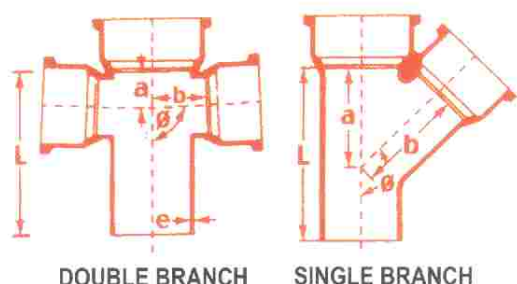
(TABLE-4) : EQUAL BRANCHES WITH AND WITHOUT ACCESS DOOR

Angle	Nominal Diameter Dn	Dimensions				Approximate Mass of Single Branch		Approximate Mass of Double Branch	
		e	L	a	b	Plain Kg	With Door Kg	Plain Kg	With Door Kg
92 ^{1/2} °	75	3.5	207	52	52	3.6	4.0	4.6	5.0
	100	4.0	238	66	66	5.7	6.3	7.2	7.8
	150	5.0	294	93	93	11.4	12.2	14.3	15.1
135°	75	3.5	233	119	119	4.1	4.5	5.3	5.7
	100	4.0	276	152	152	6.6	7.2	8.6	9.4
	150	5.0	355	216	216	14.0	14.8	17.2	18.0



All dimension are in millimeters

(TABLE-5) : UNEQUAL BRANCHES WITH AND WITHOUT ACCESS DOOR



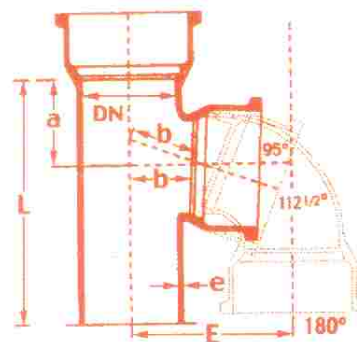
Angle	Nominal Diameter Dn		Dimensions				Approximate Mass of Single Branch		Approximate Mass of Double Branch	
	Body Dn	Branch Pipe Dn	e	L	a	b	Plain Kg	With Door Kg	Plain Kg	With Door Kg
92 ^{1/2} °	75	50	3.5	181	39	51	3.1	3.5	3.8	4.2
	100	75	4.0	211	52	65	4.9	5.5	6.0	6.6
	150	100	5.0	242	67	92	9.1	9.9	10.5	11.3
135°	75	50	3.5	197	101	106	3.3	11.4	4.0	4.4
	100	75	4.0	239	133	139	5.5	12.3	6.4	7.0
	150	100	5.0	283	179	190	10.6	13.1	12.3	13.1

All dimension are in millimeters

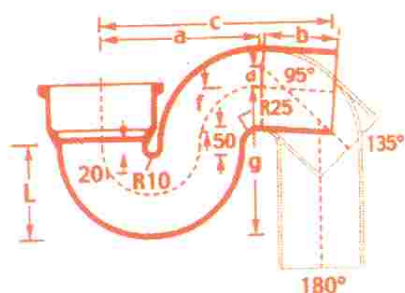
(TABLE-6) : EQUAL AND UNEQUAL INVERTED BRANCHES SOCKET TYPE

Angle	Nominal Diameter		Dimensions					APPROXIMATE MASS Kg
	Body Dn	Branches dn	a	b	E	L	e	
95°	100	100	98	66	-	276	4.0	6.0
	100	50	70	63	-	210	4.0	4.4
112 ^{1/2} °	100	100	79	91	-	276	4.0	6.1
	100	50	54	85	-	210	4.0	4.5
180°	100	100	98	102	167	276	4.0	6.5
	100	50	70	90	140	210	4.0	5.0

All dimension are in millimeters

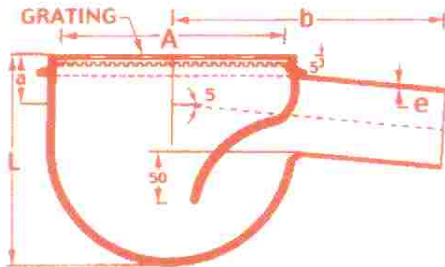


(TABLE-7) : TRAPS



Angle	Nominal Diameter Dn	Dimensions							Approximate Mass Kg	
		e	a	b	c	d	L	f		g
95°	75	3.5	170	105	275	-	110	55	165	4.3
	100	4.0	214	116	330	-	135	71	206	7.0
	150	5.0	285	140	425	-	186	98	284	10.5
135°	75	3.5	170	149	277	25	116	55	165	4.3
	100	4.0	214	175	338	32	135	71	206	7.0
	150	5.0	285	235	455	39	186	98	284	10.5
180°	75	3.5	170	159	231	-	110	55	165	4.3
	100	4.0	214	184	291	-	135	71	206	7.0
	150	5.0	285	239	387	-	186	98	284	10.5

All dimension are in millimeters



(TABLE-8) : NAHANI TRAP

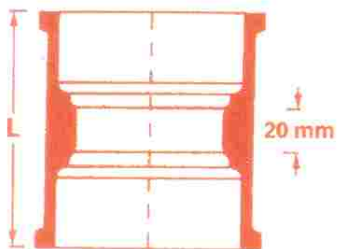
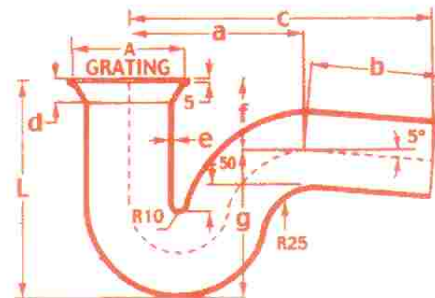
Nominal Diameter Dn	Dimensions					Approximate Mass Kg
	L	A	a	b	e	
50	175	165	45	205	4.0	5.50
75	225	165	60	215	4.0	6.50

All dimension are in millimeters

(TABLE-9) : FLOOR TRAP

Nominal Diameter Dn	Dimensions									Approximate Mass Kg
	A	a	b	c	d	e	f	g	L	
50	100	170	105	175	40	3.5	60	165	225	4.8
75	200	214	116	330	60	4.0	90	206	296	7.5

All dimension are in millimeters



(TABLE-10) : COLLARS (DOUBLE SOCKET)

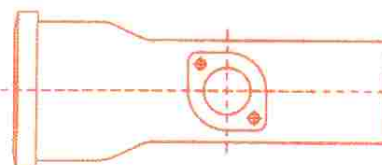
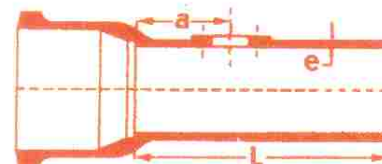
Nominal Diameter Dn	L	Approximate Mass Kg
75	150	2.3
100	160	3.4
150	170	6.4

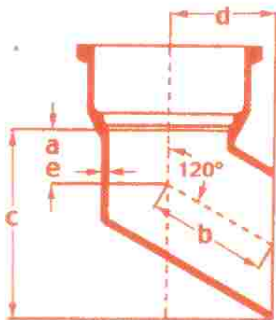
All dimension are in millimeters

(TABLE-11) : STRAIGHT INSPECTION PIECE

Nominal Diameter Dn	Dimensions			Approximate Mass Kg
	a	e	L	
75	80	3.5	272	4.0
100	100	4.0	292	6.4
150	135	5.0	338	13.0

All dimension are in millimeters





(TABLE-12) : SHOE BENDS

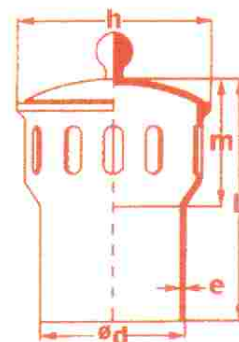
Nominal Diameter Dn	Dimensions					Approximate Mass Kg
	a	b	c	d	e	
75	38	75	117	64	3.5	2.0
100	52	92	161	80	4.0	2.8
150	55	123	200	105	5.0	4.5

All dimension are in millimeters

(TABLE-13) : COWL

Nominal Diameter Dn	Dimensions					Approximate Mass Kg
	e	m	d	l	h	
75	3.5	95	82	175	115	1.5
100	4.0	110	109	200	145	2.7
150	5.0	110	161	210	195	5.8

All dimension are in millimeters



Superiority of Kapilansh Centrifugal Pipes

Sr. No.	Parameter	AC Pipes	SWR PVC Pipes	C.I. Sand Cast Pipes	<i>Kapilansh Centrifugal Pipes</i>
01	Durability	Relatively Less	Much Less	High	Very High
02	Expected Life	5-7 years	5-7 years	20-22 years	Life Time
03	Strength	Low	Very Low	Moderate	High
04	Maintenance	Frequent	Less	Moderate	Nil
05	Installation Time	High	Low	High	Minimum
06	Fire/Heat Resistance	Low	Very Low	Good	Good
07	System Cost Over Building	High	Very High	Moderate	Minimum
08	Resale Value	Nil	Nil	Good	Better
09	Hygiene	Low	Low	Better	Best

Kapilansh Centrifugal pipe can also be supplied in sizes of 250 & 300 mm.



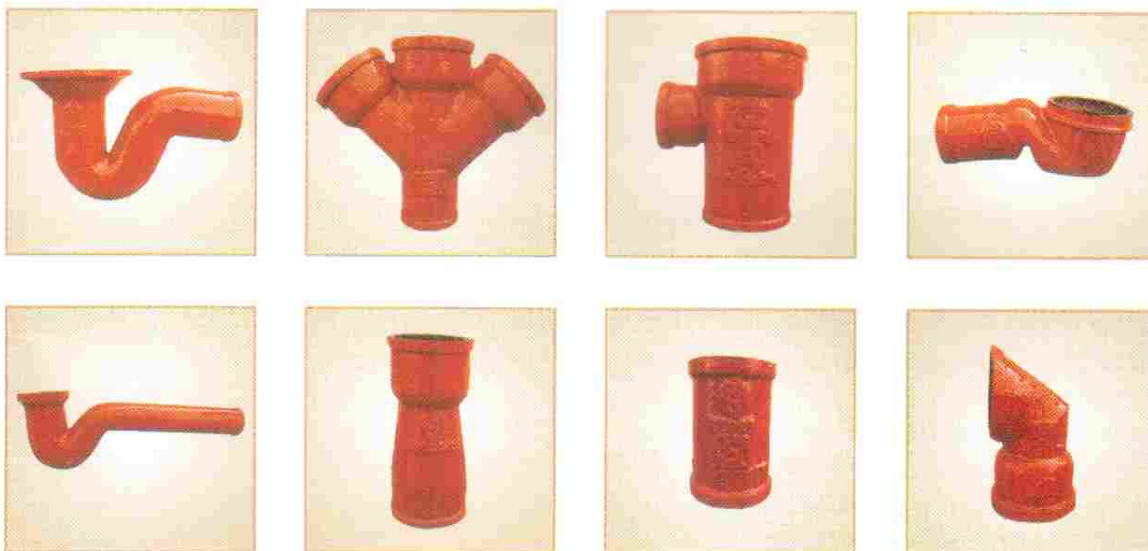
The Kapilansh Centrifugal advantage:

- * Assured quality as per specifications.
- * Superior corrosion resistance to soil, waste water & Chemicals.
- * Also superior Atmospheric weathering & corrosion resistance.
- * Low thermal expansion.
- * High compressive strength & beam load bearing capacity.
- * Smooth inner surfaces giving better flow characteristics.
- * Environment friendly as fully recyclable.
- * Better Aesthetic look.

Economical & faster in fitment because:

- * *Kapilansh Centrifugal* pipes are available in various lengths up to 3 meters, reducing number of Joints.
- * Being centrifugally cast, these pipes are light & hence easy to erect.
- * Superior normalizing process, reduces brittleness of pipes & hence less prone to breakage & cracking.
- * No leakage problem. The centrifugal process imparts very dense and homogeneous grain structure reducing porosity - the cause of leakages.

Kapilansh Centrifugal Fittings





GOVT. DEPARTMENT APPROVALS AND REGISTRATION

List of Govt. Registration & Approvals :-

1. ISO Certificate No. SG02/Q57442/IN.
2. BIS License No. **CM-L/7528784** for IS:3989.
3. Engineer in Chief Branch,
DG Map, Kashmir House, New Delhi – 110011
4. Married Accommodation Project , Lucknow
5. Engineer in Chief Branch,
Integrated HQ of MoD (Army),
Kashmir House, New Delhi – 110011
6. Chief Engineer Bhopal Zone
Military Engineer Services, Bhopal-462001.
7. HQ. Commander Works Engineer
Commander Works Engineer
Military Engineer Services, Jhansi Cantt- 284001
8. HQ. Chief Engineer(AF)
Military Engineer Services
Camp Hanuman, Ahmedabad-380003
9. Headquarters,Chief Engineer (Pune Zone)
Military Engineer Services,
Sir Manekji Mehta Road, Pune-411 001
10. Headquarters, Chief Engineer
Southern Command, Pune - 411001
11. HQ. Chief Engineer. (Chennai Zone)
Military Engineer Services,
Island Grounds, Chennai - 600009
12. Letter of Chief Engineer (Fy) Hyderabad.
Military Engineer Services, Secundrabad-500003
13. MECON Limited (HO), Ranchi, Jharkhand.
14. Approval of Product From Central Public Works Department,
418-A, Nirman Bhawan, New Delhi
15. Letter of Chief Engineer (CSQ),
418-A, Nirman Bhawan , Delhi
16. Approval of Product From Central Public Works Department,
Nirman Bhawan, Sector - 10, Vidhyadhar Nagar, Jaipur - 302023
17. Letter of Chief Engineer, A-block, CGO Complex,
Seminary hills, Nagpur
18. List of Approved Makes/Manufacturers of Materials of Project Construction,
Police Headquarters, Kamala Market, Delhi.
19. Brihanmumbai Mahanagarpalika.
Office of the Deputy City Engineer (Planning & Design) City, Mumbai-400001
20. City And Industrial Development Corporation Of Maharashtra Limited (CIDCO).
Navi Mumbai – 400164
21. Letter of Maharashtra State Power Generation Co. Ltd.,
Koradi Via- Nagpur- 441111
22. Letter Of Executive Engineer CIDCO, Maharashtra



Private Consultant Approval And Recognition

1. M/s. Spectral Services Consultants Pvt. Ltd. Mumbai
2. M/s. Potential Services Consultants (P) Ltd.
Suraj Ganga Soft Park, 34 1st Main 3rd Phase,
J.P Nagar, Bangalore-560078
3. M/s. Hydro Mechanical Consultants,
B-107, Blue Bell Apartment,
1st Floor, Choithiram Gidwani Marg,
Mumbai-400074
4. M/s. MEP Consulting Engineers,
A-11, Krishna Co-Op., Hsg Soc.
Subhash Road- A, Vile Parle (E)
Mumbai – 400057
5. M/s. John Mech- EL Technologies (P) Ltd.,
Engineering Consultants,
109-R, Andheri Industrial Estate, Off Veera Desai Road,
Andheri (W), Mumbai-400053
6. M/s. Dnyanesh G. Bhawe
Plumbing & Fire Fighting Consultant,
C-702, Green Gagan, Lokhandwala Complex
Kandivali (East), Mumbai-400101
7. M/s. Sunil Services Limited
3, Shree Pancham Apartment
Pandit Malhorrao\Kulkarni Marg,
Opp Don Bosco School Mumbai
8. M/s. Pankaj Dharkar & Associates, Mumbai
9. M/s. ARKK Consultant.
30, Joshi Wadi, Bhawani Shankar Road
Chitale Path, Dadar (W)
Mumbai - 400028
10. M/s. DLF Limited.



Our Prestigious Clients :

- M/s Ahluwalia Contracts (India) Limited., New Delhi
- M/s Abhishek Millennium Contracts Pvt. Limited., Mumbai
- M/s Adani Power Limited., Ahmadabad
- M/s B.G.Shirke Construction & Technology Limited., Mumbai
- M/s Blue Star Ltd., Mumbai, Pune, Vizag, Hyderabad, Kolkata
- M/s Blue Star Electro. Mech. Ltd., Mumbai
- M/s DLF India Limited., New Delhi
- M/s. Era Infra Engineering Ltd., New Delhi
- M/s ETA Engineering Pvt Limited., New Delhi, Chennai, Mumbai
- M/s ITC Hotel Limited., Chennai
- M/s. IVRCL Infrastructures & Project Limited
- M/s K. Raheja Group., Mumbai
- M/s Larsen & Toubro Limited., New Delhi, Mumbai
- M/s Lodha Group., Mumbai
- M/s Laxmi Sanitary Engrs. & Contracts., Mumbai
- M/s MSK Project India Limited., Bina.
- M/s Nagarwala Engineers & Co. P Ltd., Mumbai
- M/s Reliance Ind Limited., Mumbai
- M/s Ramky Infrastructures Limited
- M/s. RPP Infra Projects Ltd., Chennai
- M/s Sterling & Wilson Limited., Mumbai, Noida, New Delhi
- M/s Sudhakaran Nair & Co. Pvt Ltd., Chennai
- M/s Tata Project Limited., Bhusawal
- The Taj Hotel Projects., Bangalore, Delhi, Raipur
- The Hyatt Hotel Projects., Goa, Hyderabad, Pune
- M/s Voltas India Limited.
- M/s. Welspun Project Limited., Baroda

Government Department Supply

- All India Medical Science Institute
- Brihmumbai Corporation Projects
- Central Public Works Department Projects
- Chandigarh Housing Board Projects
- City & industrial Development Corporation of Maharashtra Limited
- ESI Hospital Projects,
- Income Tax Colony, Nagpur (NBCC)
- Military Engineers Services Projects
- Married Accommodation Projects
- NTPC, Bhilai, Chennai
- Uttar Pradesh Rajakiya Nirman Nigam Limited



OUR OTHER PRODUCT RANGE



KDUPL Branded Pressure pipes for Water, Oil, Chemicals and Gas

1. Able to carry Potable water, Acids, Chemicals and Gas.
2. ISI marked
3. Corrosion Resistant
4. Ideal for Long Distance pressure water supply.
5. Long Life

KDUPL

**Centrifugally Cast (Spun)
Iron Pressure Pipes**



KAPITRODE™ Branded Cast Iron Earthing Electrodes.

1. Reliable Earthing Electrode for Lifelong Safe Earthing
2. Highly corrosion resistant
3. Supplied with Back Filling Compound and Connection accessories.
4. Gives Lifelong and consistent results
5. Easy and economical to Install
6. Fit and Forget
7. Approved and endorsed for Performance by many government authorities and Electrical consultants.
8. CPRI Tested and Approved

“KAPITRODE”™

For safe earthing

As Per IS-3043

Practice for Earthing

Kapilansh Centrifugal 'Ductile Iron' Manhole Covers, Frames & Gratings



SILENT FEATURES :

- Manufactured as per EN 124 standard.
- Safe handling due to high strength and low weight
- Open / Closed keyholes for easy lifting.
- Frames for better security.
- Anti skid checker design.
- Large open area for water drainage.
- Heavy duty traffic loading.
- Multiple grates for easy handling.

OPTIONAL FEATURES :

- Locking arrangement available, if required.
- New patterns can be developed within 6 weeks.
- Buyer's logo provided as per buyer's requirement.

Drain Pipelines for the Life Time.....



Manufacturers of Cast Iron Socket & Spigot Spun Pipes,
Cast Iron Soil Pipes & Fittings & Cast Iron Earthing Electrodes
'Ductile Iron' Manhole Covers, Frames & Gratings.



An ISO 9001:2008 Certified Company

Corporate Office & Works: Kh. No. 63, Khairy, Kamptee Road, Nagpur 440026. (M.S)
Phone No. 0712-2631859, 9272225067. Fax : 0712-2641308

Regd. Office: 112 Handloom Market Gandhibagh Nagpur 440002. (M.S.)
Phone No. 0712-6462720. Fax : 0712-2765282
soil@kapilansh.com www.kapilansh.com

Due to continuous research and development, specifications are subject to change without notice, Hence this brochure is no legally binding.